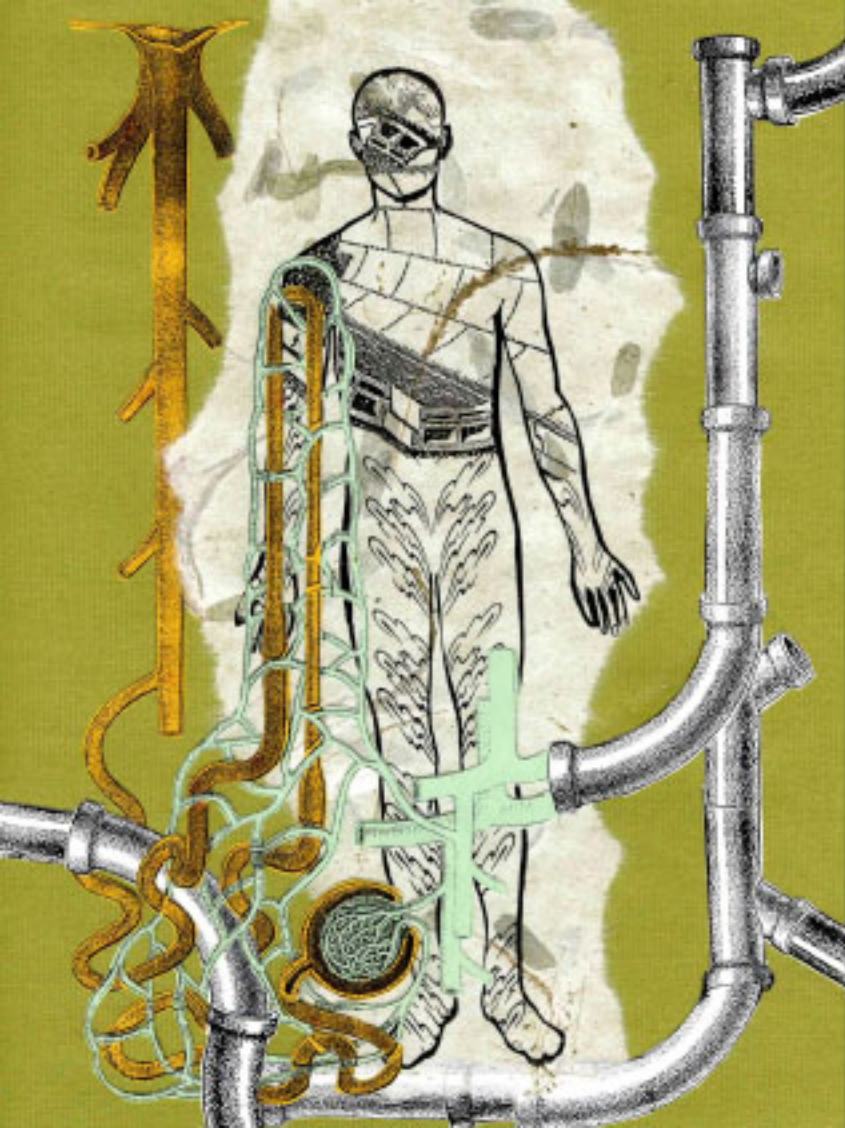


Watts, Patricia, and Amy Lipton. *Waterworks*.
Contemporary Quaterly Project Space, 2006.



CONTEMPORARY
QUARTERLY
VOL. 4

WATERWORKS

CONTEMPORARY QUARTERLY PROJECT SPACE
WWW.CONTEMPORARYQUARTERLY.COM
PRESENTS

WATERWORKS

SUMMER 2006

BRANDON BALLENGÉE
JACKIE BROOKNER
BASIA IRLAND
SANT KHALSA
CHRISTY RUPP
TAO URBAN

CURATED BY PATRICIA WATTS AND AMY LIPTON, ECOARTSPACE

CONTEMPORARY QUARTERLY IS A QUARTERLY FINE ART JOURNAL AND EXHIBITION SPACE THAT PUTS CONTEMPORARY ART IN CONTEXT. IT PRESENTS THE WORK OF EMERGING AND ESTABLISHED ARTISTS IN RELATION TO ONE ANOTHER, IN VIEW OF ART WORLD TRENDS AND WITHIN THE BROADER PERSPECTIVE OF ART HISTORY. VISIT ON-LINE AT CONTEMPORARY QUARTERLY'S PROJECT SPACE, WWW.CONTEMPORARYQUARTERLY.COM

Cover: **Christy Rupp**, *Plumbing*, 2001-2004, Paper collage, 11" x 8"

©2006 CONTEMPORARY QUARTERLY



Brandon Ballengée
Striped Killifish, Fundulus Majalis, 2003

Digital C-print mounted on Plexiglas, 10.5" x 24"

WATERWORKS

is an exhibition of six ecologically engaged artists

whose works focus on water issues. Included are three American artists living east of the Mississippi River and three artists living west of the Mississippi River. Their media includes photography, digital technology, collage, and sculpture. The works are diverse but reflect a common interest in addressing the physical, ecological, spiritual, and social dimensions of our most precious life giving substance.

This exhibition evolved from a desire to present collectible works created by artists who are addressing the pressing realization that humans and nature are mutually interdependent. Typically, environmental or eco-artists create works outdoors in nature, working in watersheds, interacting with communities, and educating people about ecological systems. Most of their work is temporal, community based, site-specific, and falls under the genre of public art and performance; actions and interventions. The work is often collaborative, created with the support of and in partnership with organizations and individuals, and cross-disciplinary, as the artists are working on specific projects with scientists, environmentalists, conservationists, government agencies, and citizens. Although they work collaboratively, the artists in *WaterWorks* also maintain studio practices to create works that can be presented in museums and sold in galleries.

In discussing environmental themes for this exhibition, the topic of water repeatedly arose to the surface, as it should, for we stand on the brink of a global water crisis. All of the artists in *WaterWorks* have addressed issues of water in their art for many years, investigating its aesthetic qualities, its function as a source of food, its life giving essence, its cycles, and more recently, its scarcity and contamination. Add to that the growing privatization of water and our impending global warming crisis, and it seems more prescient than ever that artists' voices be heard. It takes the extraordinary vision of artists to inform us and alert us, and most importantly, to propose innovative ideas as to how we can aesthetically reclaim, restore, and co-exist within our natural environment.

Patricia Watts and Amy Lipton
Guest Curators www.ecoartspace.org

Brandon Ballengée

*Cleared & Stained Clearnose Skate, Raja
Eglanteria, 2003*

Digital C-print mounted on Plexiglas, 60" x 48"





Brian Ballangée

Cleared & Stained Atlantic Sturgeon, Acipenser Oxyrinchus, 2003

(Bottom)

Mudpuppy, Necturus Maculosus, 2003

Both digital C-print mounted on Plexiglas, top: 13" x 40", bottom: 18" x 60"

ARTISTS

Brandon Ballengée

More than many environmental artists, the work of Brandon Ballengée bridges the gap between research biology and art. He combines a fascination with animal species such as fish and amphibians with sophisticated digital technology. Ballengée creates his multidisciplinary works out of information generated from ecological field trips and laboratory research. He collaborates with numerous scientists to conduct biological research and uses advanced imaging procedures. The highly detailed intricacy of his images provoke an awareness of the intense beauty of these creatures and call attention to what might otherwise be overlooked.

Jackie Brookner

Jackie Brookner creates living bio-sculptures made of mosses, ferns and other plants that grow on stone and concrete structures. Water is circulated via tubes and pumps, and mists over the sculptures. Through this natural process, the plants transform pollutants and toxins into nutrients and cleanse the water collected in a pond like tank beneath where fish are swimming. *I'm You*, and her other bio-sculptures can be seen as prototypes, demonstrating a viable, aesthetic working model for larger water restoration projects. Brookner's public artworks are collaborative and bring her vision into the larger context with ecologists, earth scientists, landscape architects, policymakers, city governments and communities.

Basia Irland

In an ongoing series entitled *Waterborne Disease and Non-potable Agua*, Basia Irland applies photo transfers on fabric scrolls depicting microscopic cells of water-borne diseases and parasites to emphasize the vulnerability of our drinking water supplies around the world. *Vibrio cholerae*, *Dracunculus medinensis II*, *Entamoeba histolytica III*, *Cryptosporidium parvum II* are just a few of the names of water-borne bacterium that Irland has printed on luxurious pieces of sarí silk and chiffon to hang on walls, presented like sacred scrolls. Their beautiful, colorful images are in stark contrast to the dangerous organisms they depict. Each year, over 5.2 million people in developing countries die from water-related diseases.

Sant Khalsa

Sant Khalsa's photographic series *Western Waters* addresses the commodification of water as consumer product and human desire - a never-ending thirst. With over 200 photographs in this series, Khalsa documents the growing phenomenon of retail water stores in the southwestern U.S. in mostly generic strip mall settings. This contemporary phenomenon and the success of these stores is based on consumer fears that their tap water is not safe to drink. Her starkly beautiful black and white photographs may serve the future as historical documentation of what could soon become commonplace in our society.

Christy Rupp

Since the '70's Christy Rupp has been studying the impact of economics on the environment. Originally a student of animal behavior, her work has examined topics including urban fauna, genetically engineered foods, clean water, and globalization, in a quest to make visible changes that occur over time, or on a microscopic scale. Her collage series relates to the impact of unbridled development on water resources and habitat. Rupp observes the effects of sprawl on the landscape, almost as though we have witnessed the effects of strip culture rapidly slapped over layers of history and land usage as rapid urbanization redefines our perception of Earth and her fragments.

Tao Urban

In Tao Urban's *Source, Resource* (Waterbar) series his fiberboard watershed coolers address how nature is transformed to meet the demands of our consumer culture. For this work, Urban traveled to the headwaters of three major rivers to collect waters that are ultimately being redirected to meet the needs of a very thirsty Los Angeles basin. The water bottles are served up in custom fabricated coolers in the shapes of the hydrologic units that carry this precious resource from the mountaintops, through the tributaries, and down to the sea. The color patterns signify the depth, temperature, and distribution of the water bodies.

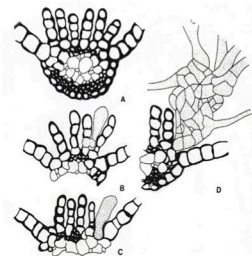


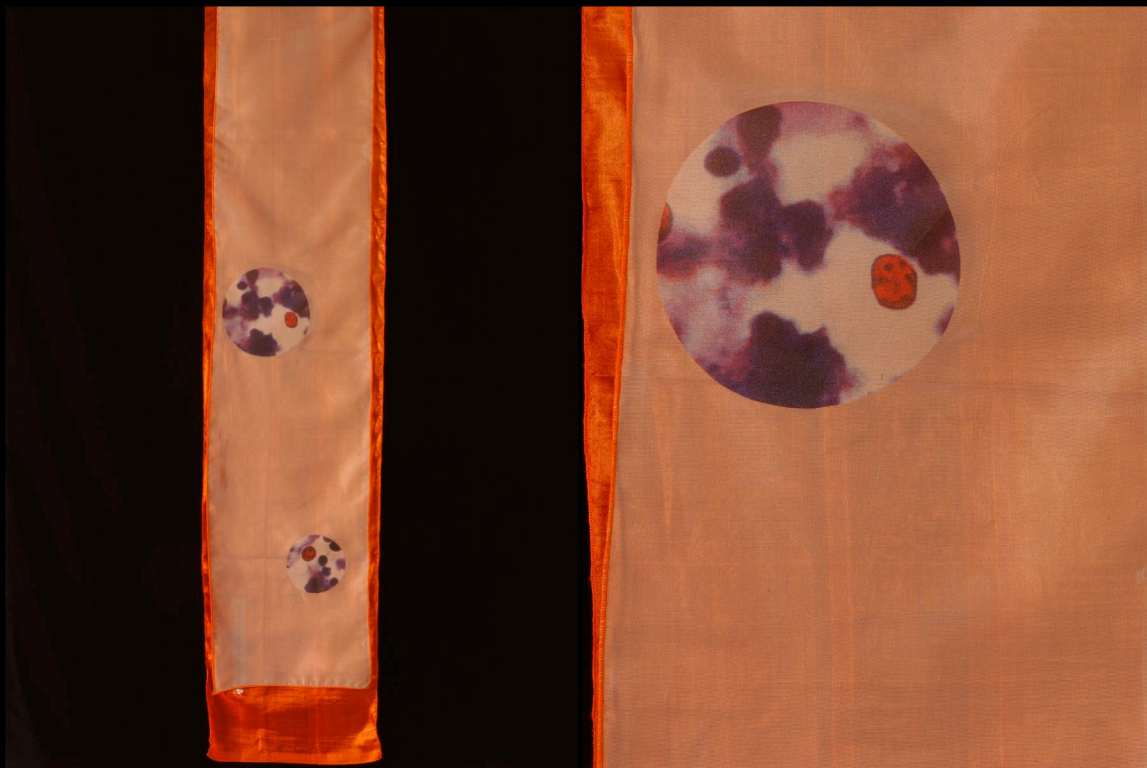
Fig. 3.2 A-D. Regeneration of leaf in *Anacharis pulchra*. A, Vertical section of mature leaf.



Jackie Brookner

I'm You, 2000

Moss, volcanic rock, water, wetland plants, winterstone, steel,
fish, 67" x 112" x 50"



Basia Irland

Cryptosporidium Parvum II, 2005

Sari silk, photo transfer, pipette, chiffon, 42" x 8"

Basia Irland

Detail: *Cryptosporidium Parvum II*, 2005

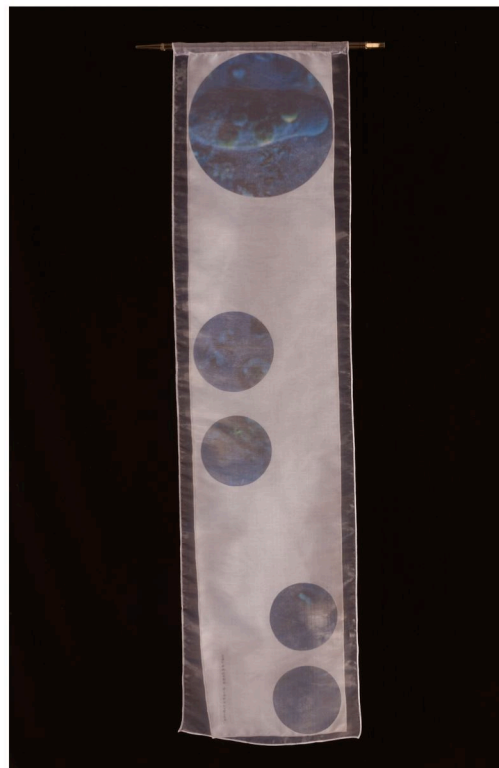
Sari silk, photo transfer, pipette, chiffon, 42" x 8"



Basia Irland

Dracunculus Medinensis II (Guinea Worm), 2005

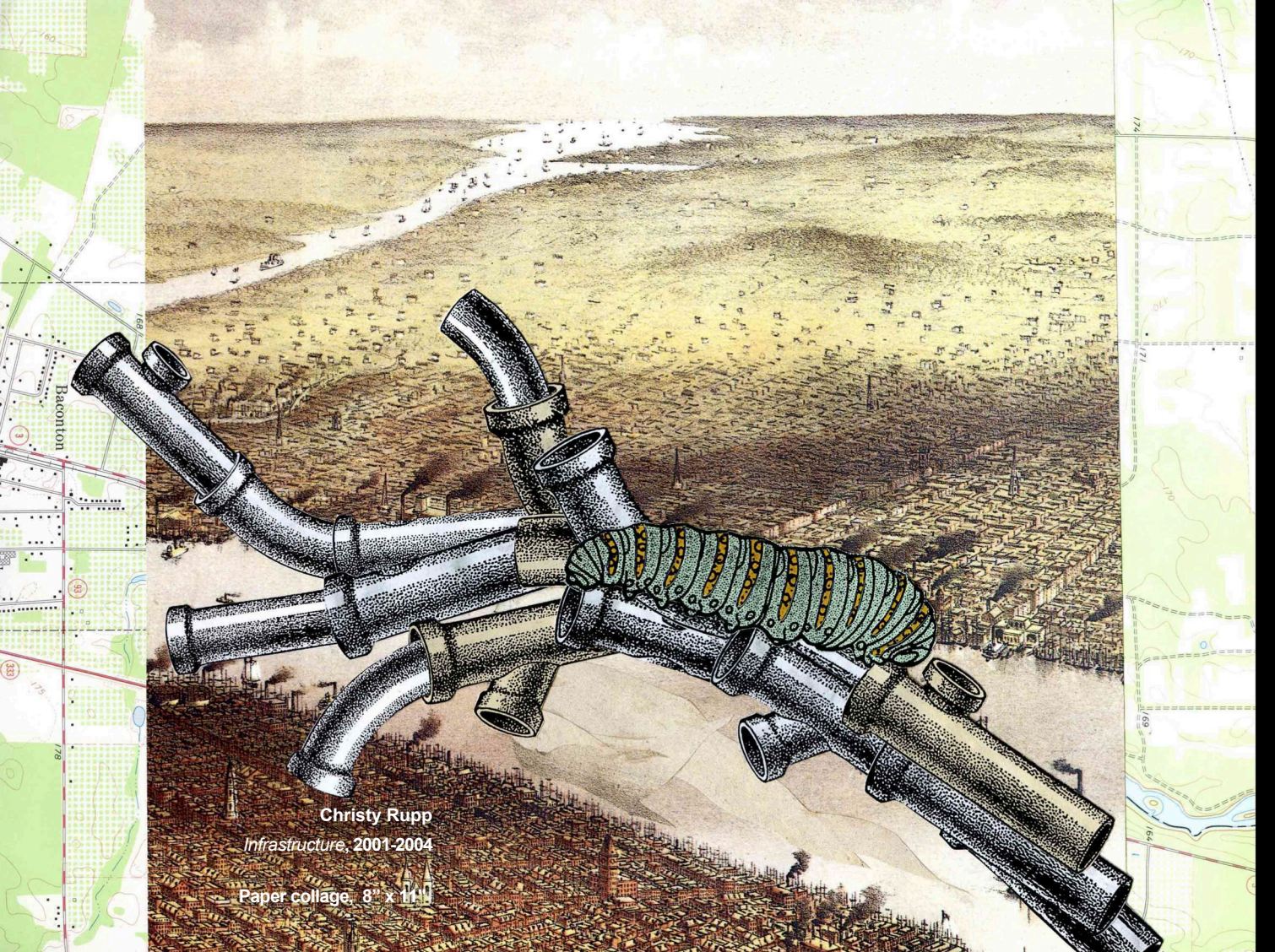
Sari silk, photo transfer, pipette, chiffon, 43" x 11"



Basia Irland

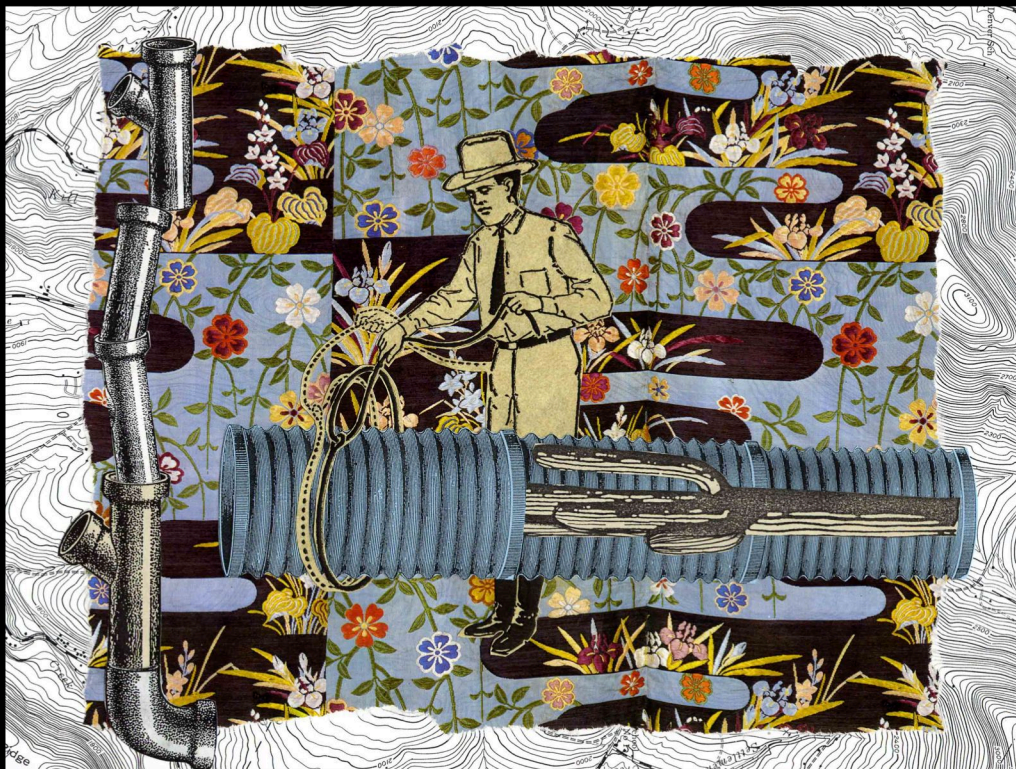
Entamoeba Histolytica III, 2001

Sari silk, photo transfer, pipette, organza, 42" x 10.25"



Christy Rupp
Infrastructure, 2001-2004

Paper collage, 8" x 11"



Christy Rupp

Commons, 2001-2004

Paper collage, 8" x 11"

Christy Rupp

Public Domain, 2001-2004

Paper collage, 11" x 8"





Sant Khalsa

Paradise Water, Somerton, Arizona, 2001

Gelatin-silver print, 6" x 7"

Sant Khalsa

Good Water, Montebello, California, 2002

Gelatin-silver print, 6" x 7"



Sant Khalsa

Water & Ice U Love, Glendale, California, 2002

Gelatin-silver print, 6" x 7"

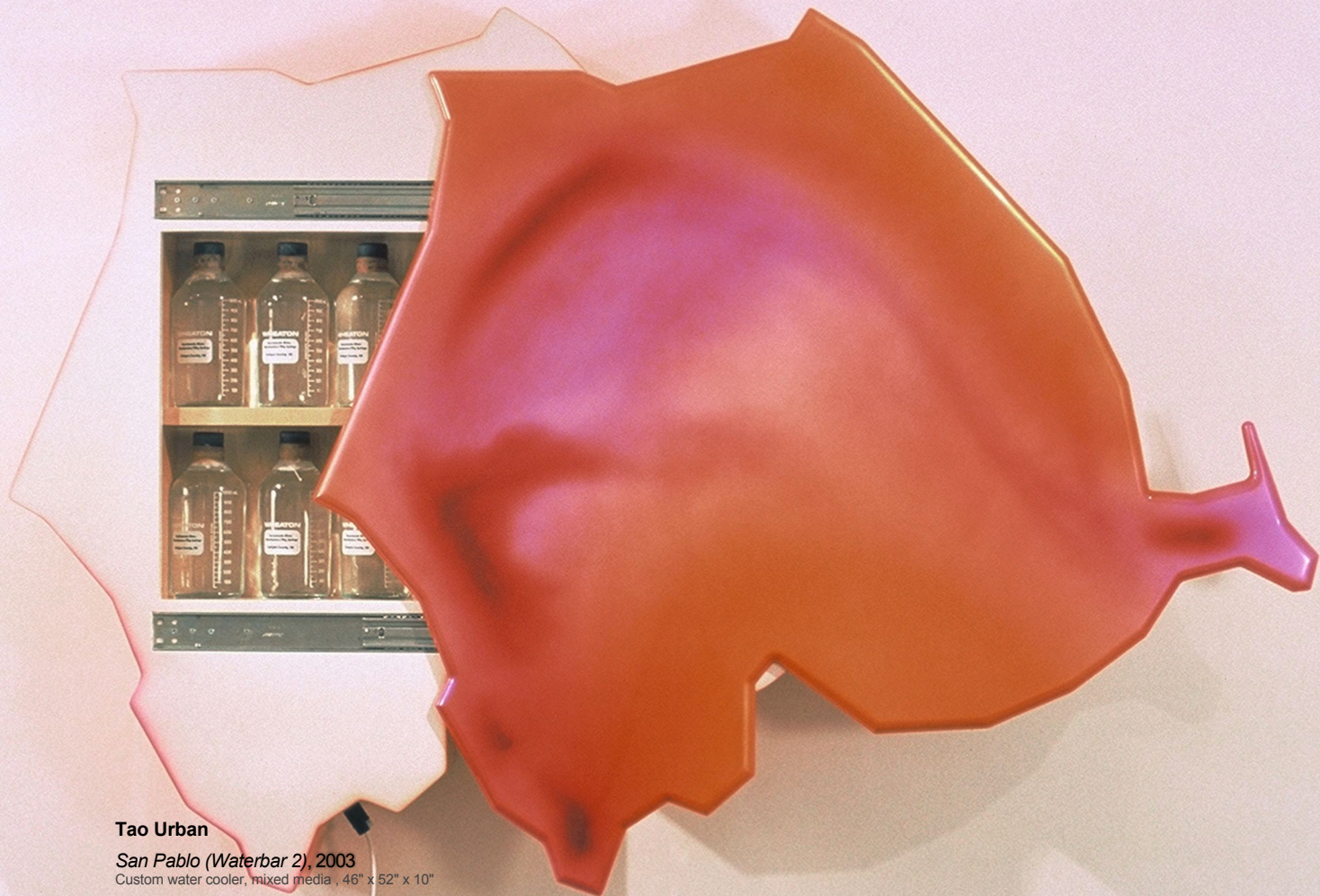




Sant Khalsa

Cool Water, Los Angeles, California, 2002

Gelatin-silver print, 6" x 7"

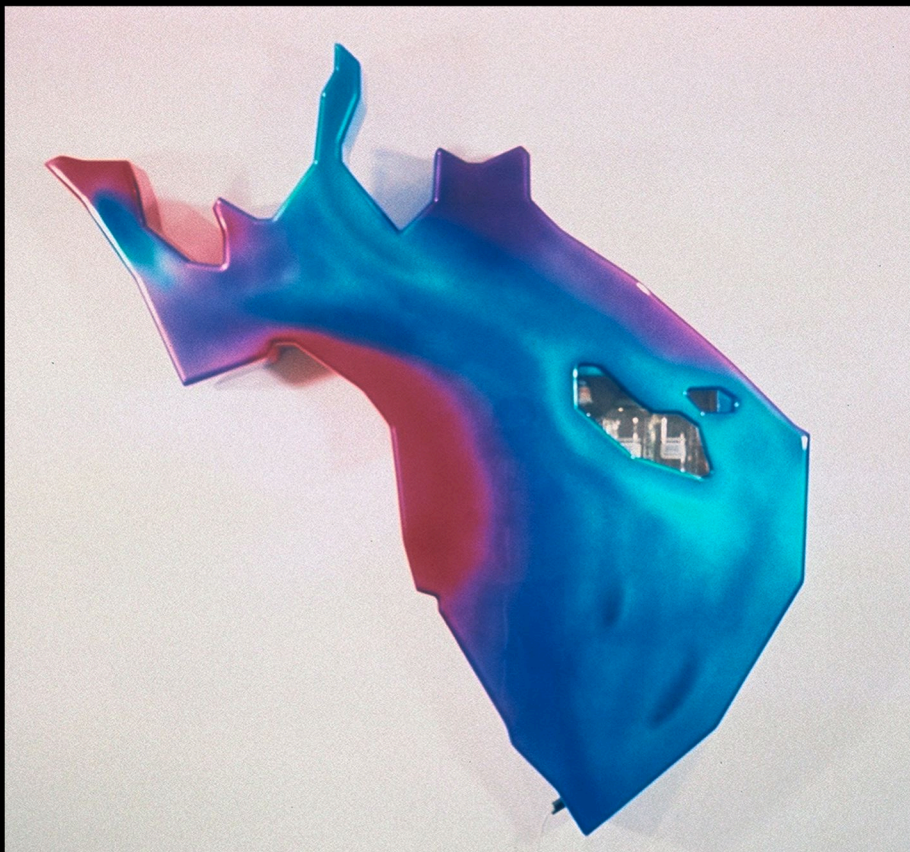


Tao Urban

San Pablo (Waterbar 2), 2003

Custom water cooler, mixed media , 46" x 52" x 10"

Bottled water from Big Springs, Sacramento River

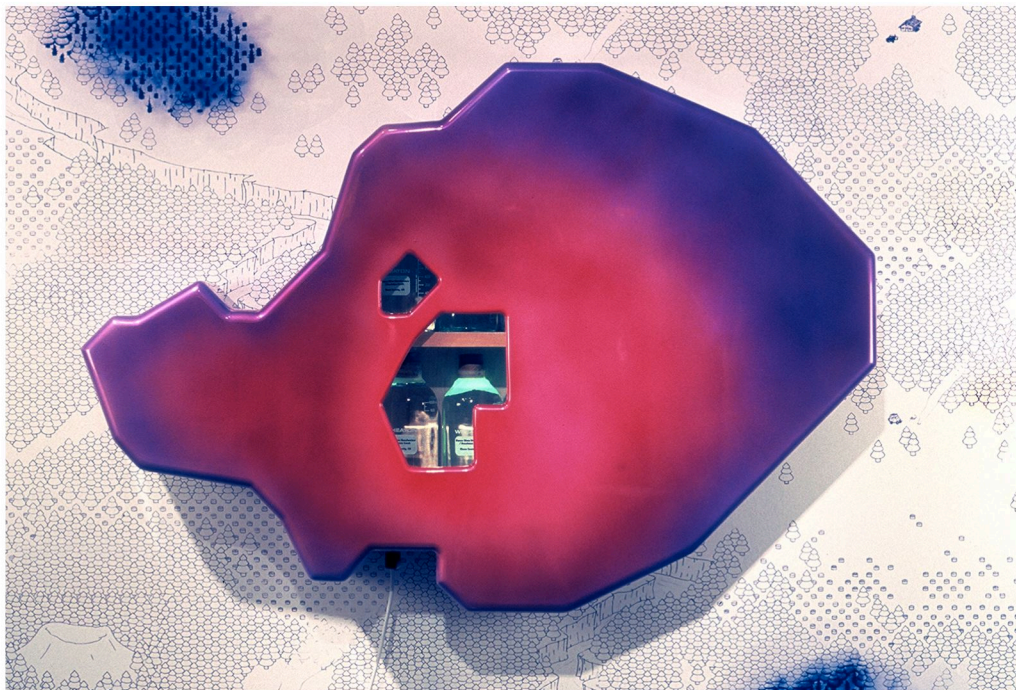


Tao Urban

Colorado (Waterbar 3), 2003

Custom water cooler, mixed media, 64" x 58" x 10"

Bottled water from Rocky Mountain National Park, Colorado River

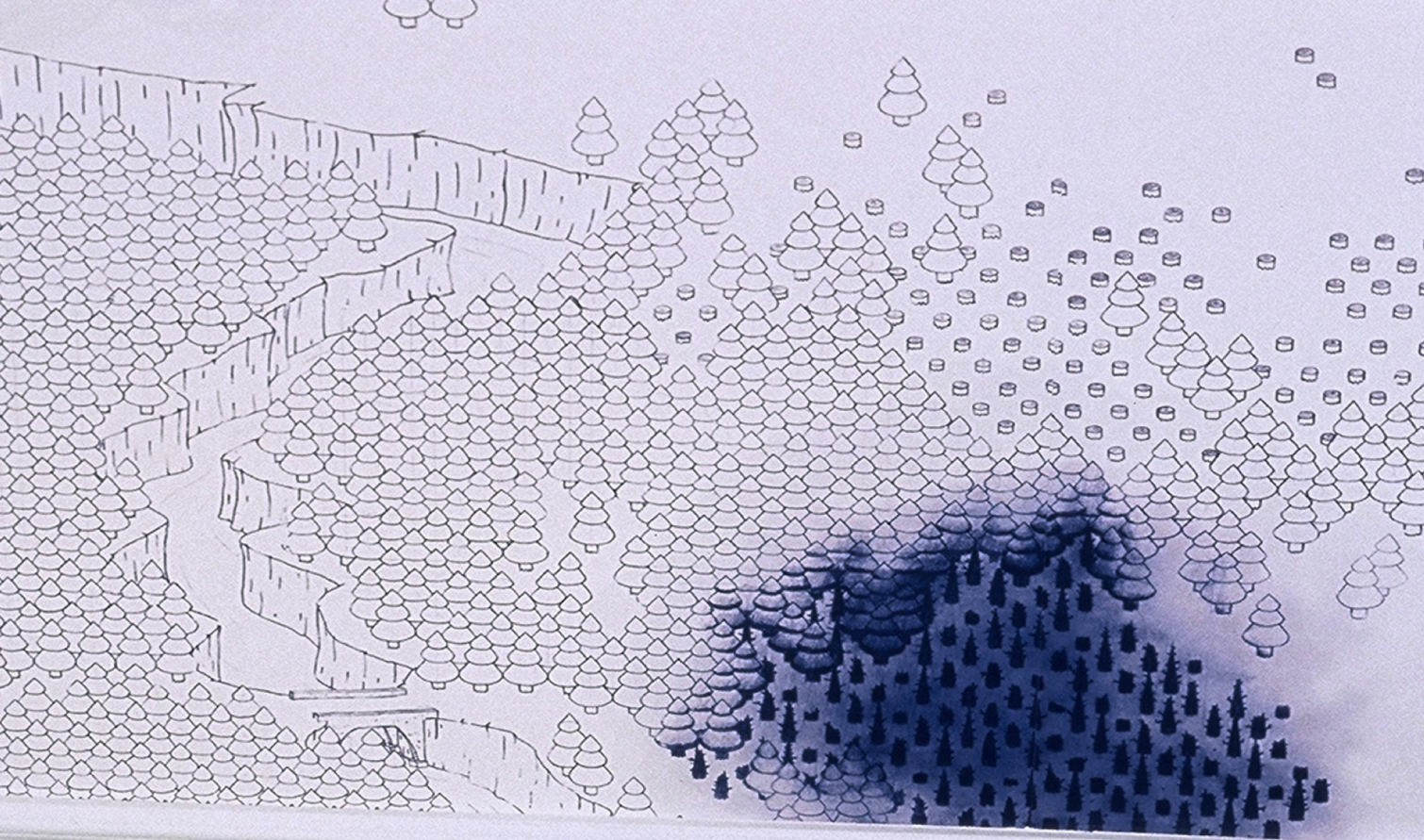


Tao Urban

Mono (Waterbar 1), 2003

Custom water cooler , mixed media, 30" x 36" x 10"

Bottled water from Deadman's Creek, Owens River



Tao Urban

Everyone Needs Their Own Walden, 2003
Wallpaper, size variable

ARTIST BIOGRAPHIES

BRANDON BALLENGÉE

Born: Sandusky, Ohio **Current Residence:** New Haven, CT and New York City
Watershed: Quinnipiac River and Catskill/Delaware
Candidate for PhD, University of Applied Sciences and Art, Zürich, Switzerland

JACKIE BROOKNER

Born: Providence, Rhode Island **Current Residence:** New York City
Watershed: Catskill/Delaware
MA, ABD, Harvard University, Cambridge, MA, 1967-70; BA, Wellesley College, Wellesley, MA, 1967

BASIA IRLAND

Born: Fort Smith, Arkansas **Current Residence:** Albuquerque, New Mexico
Watershed: Rio Grande (upper basin)
MFA, University of Massachusetts, Amherst, 1974; BFA, University of Illinois, Champaign-Urbana, IL, 1968

SANT KHALSA

Born: New York, New York **Current Residence:** San Bernardino, California
Watershed: Santa Ana
MFA, California State University, Fullerton, 1990; BFA, Maryland Institute College of Art, Baltimore, MD, 1973

CHRISTY RUPP

Born: Rochester, New York **Current Residence:** New York City & the Catskill Mountains, New York
Watershed: Catskill/Delaware
MFA, Rinehart School of Sculpture, Maryland Institute College of Art, Baltimore, MD, 1977
MAT, Rhode Island School of Design, Providence, RI, 1974; BA, Colgate University, Hamilton, NY, 1973

TAO URBAN

Born: Walnut Creek, California **Current Residence:** Los Angeles, California
Watershed: Arroyo Seco
MFA, Cranbrook Academy of Art, Bloomfield Hills, MI, 2000
BFA, Rhode Island School of Design, Providence, RI, 1993